



For the sweet things in life

Rotary Lobe Pumps for the Confectionery Industry



Media

- Biscuit Cream
- Caramel
- Chocolate
- Cocoa Butter
- Cocoa Mass
- Condensed Milk
- Fat
- Fondant
- Glucose
- High-Boiled Sugar Syrup
- Jellies

Application

- Crystallisation
- Enrobing
- Mixing
- Rework
- Storage
- Transfer

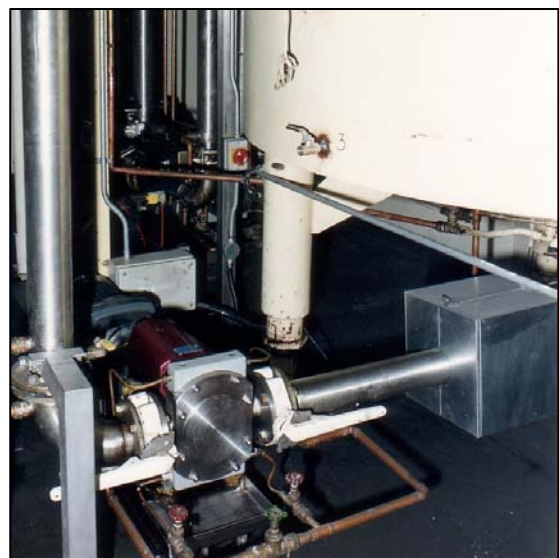
As a recognised market leader in pumping technology SSP has been at the forefront of supplying rotary lobe pumps to the confectionery industry for over 50 years.

SSP rotary lobe pumps are to be found in numerous confectionery processes, where their reliable low shear flow characteristics are ideally suited to the transfer of media such as chocolate and sugar syrups.

The SSP Advantage

- **Hygienic construction**
Non-contacting pumphead design with all metallic pumped media wetted components manufactured in 316L stainless steel.
- **Cost effective easy maintenance**
Low running and maintenance costs and easy access to pumphead minimising downtime, results in a reduced lifecycle cost (LCC).
- **Cost effective performance**
SSP Series D pumps are constructed in ductile iron for use where stainless steel is unnecessary on duties such as chocolate.

- **Ability to pump abrasive media**
Non-contacting pumphead design enhances the pump's ability to handle abrasive crystalline slurries, whilst minimising product damage.
- **CIP/SIP ability**
Temperatures up to 200°C.



Series S pump on fondant duty

Rotary Lobe Pumps - *Right first time, every time*

SSP offers the broadest range of rotary lobe pumps available in the world today, channelled exclusively through a selected worldwide distribution network, and directly from the company's production facility located in Eastbourne, England.

Series L

SSP Series L stainless steel rotary lobe pumps provide the simple solution to many processes.

- Flow rates up to 48 m³/h
- Differential pressures up to 8 bar
- Port sizes 40 - 80 mm



Series S

SSP Series S stainless steel rotary lobe pumps suitable for a variety of process and transfer applications.

- Flow rates up to 106 m³/h
- Differential pressures up to 20 bar
- Port sizes 25 - 150 mm



Series D

SSP Series D ductile iron rotary lobe pumps fulfill positive transfer duties throughout industry by providing durable cost effective performance.

- Flow rates up to 180 m³/h
- Differential pressures up to 15 bar
- Port sizes 80 - 150 mm



Rheology Testing

In specifying a rotary lobe pump for a particular application, a crucial consideration is an understanding of how the pumped media will behave in the pump, connecting pipe work and associated equipment.

Our on-site laboratory is equipped with a computerised rheometer to be able to determine a fluids viscous behaviour. As the only rotary lobe pump manufacture in Europe with this facility that we know of, we feel this service is invaluable ensuring our philosophy of right first time, every time.

Application Experience

When you approach SSP for advice, you get access to the largest accumulation of processing expertise and application know-how in the world. With our unrivalled application experience you can be sure the SSP pump specified will be the right one for the job. First time, every time.

Literature code number
F/209/0807

Alfa Laval reserves the right to change specifications without prior notification.

Alfa Laval Ltd
SSP Pumps
Birch Road, Eastbourne
East Sussex BN23 6PQ, England
Tel: +44 (0) 1323 414600
Fax: +44 (0) 1323 412515
www.ssppumps.com