



Beating all others

Rotary Lobe Pumps for the Sugar Industry



Media

- Glucose
- High / Low Green Syrup
- Liquid Sugar
- Magma
- Massecuite
- Molasses
- Sugar Syrup
- Thick Juice
- Treacle

Application

- Carbonation
- Crystallisation
- Evaporation
- Recovery
- Separation
- Storage
- Tanker Loading

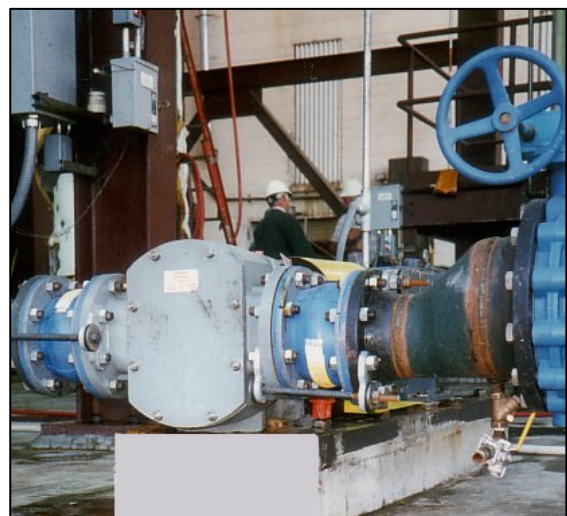
As a recognised market leader in pumping technology SSP has been at the forefront of supplying rotary lobe pumps to the sugar industry for over 50 years.

SSP rotary lobe pumps are to be found in numerous sugar processes, where their reliable low shear flow characteristics are ideally suited to the transfer of media such as magma, massecuite and thick juice.

The SSP Advantage

- **Cost effective performance**
SSP Series D and G pumps are constructed in ductile iron for use where stainless steel is unnecessary on duties such as magma and massecuite.
- **Ability to pump abrasive media**
Non-contacting pumphead design enhances the pump's ability to handle abrasive crystalline slurries, whilst minimising product damage.
- **Low energy consumption**
Lower power requirements than other pump technologies.

- **Cost effective easy maintenance**
Low running and maintenance costs and easy access to pumphead minimising downtime, results in a reduced lifecycle cost (LCC).
- **Compact design**
Occupies considerably less floor space than other pump technologies.



Series D pump handling massecuite

Rotary Lobe Pumps - *Right first time, every time*

SSP offers the broadest range of rotary lobe pumps available in the world today, channelled exclusively through a selected worldwide distribution network, and directly from the company's production facility located in Eastbourne, England.

Series S

SSP Series S stainless steel rotary lobe pumps suitable for a variety of process and transfer applications.

- Flow rates up to 106 m³/h
- Differential pressures up to 20 bar
- Port sizes 25 - 150 mm



Series D

SSP Series D ductile iron rotary lobe pumps fulfill positive transfer duties throughout industry by providing durable cost effective performance.

- Flow rates up to 180 m³/h
- Differential pressures up to 15 bar
- Port sizes 80 - 150 mm



Series G

SSP Series G rotary lobe pumps are designed for high volume transfer duties and are amongst the world's largest pumps of this type.

- Flow rates up to 680 m³/h
- Differential pressures up to 10 bar
- Port sizes 150 - 300 mm



Abrasion Resistance

For abrasive applications the Series D and G ductile iron pump casings may be supplied with hardened, replaceable wear plates that can be replaced in situ with minimal pump dismantling.

Interchangeable Rotors

Mathematically defined profile and precision manufacture ensure interchangeability of rotors with sealed involute splines giving accurate position, location and positive rotor drive. Option of bi-lobe rotors in stainless steel may be supplied to enhance solids handling capability.

Rheology Testing

In specifying a rotary lobe pump for a particular application, a crucial consideration is an understanding of how the pumped media will behave in the pump, connecting pipe work and associated equipment.

Our on-site laboratory is equipped with a computerised rheometer to be able to determine a fluids viscous behaviour. As the only rotary lobe pump manufacture in Europe with this facility that we know of, we feel this service is invaluable ensuring our philosophy of right first time, every time.

Literature code number
F/208/0807

Alfa Laval reserves the right to change specifications without prior notification.

Alfa Laval Ltd
SSP Pumps
Birch Road, Eastbourne
East Sussex BN23 6PQ, England
Tel: +44 (0) 1323 414600
Fax: +44 (0) 1323 412515
www.ssppumps.com