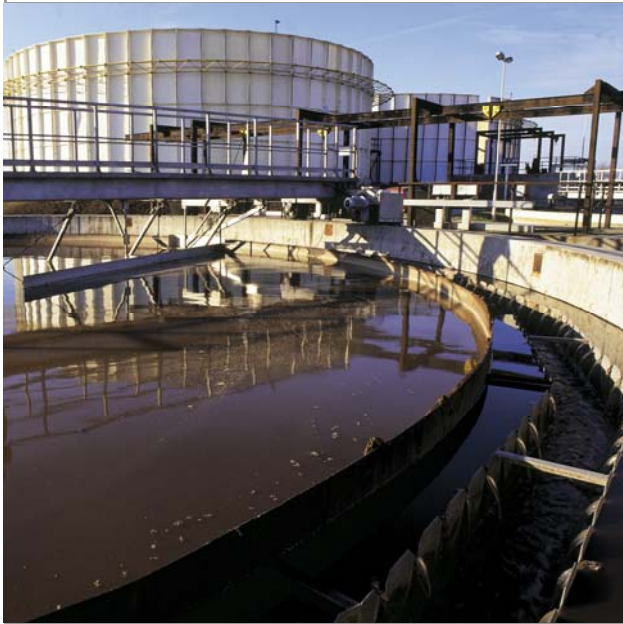




## In the thick of it

### Rotary Lobe and Disc Pumps for Waste Treatment Processes



#### Media

- Primary Sludge
- Digested Sludge
- Humus Sludge
- Raw Sewage
- Abattoir Waste
- Poultry Waste
- Other Industrial Waste

#### Application

- Primary De-sludging
- Secondary De-sludging
- Humus De-sludging
- Thickener Feed
- Digester Feed
- Filterpress Feed
- Tanker Loading

As a recognised market leader in pumping technology SSP has been supplying pumps for waste treatment processes for over 25 years.

Reliability is a primary concern of the industry, particularly as pumps are frequently installed in remote locations and, as a result, need to operate unattended. Equally important is the ability to handle a range of waste products, including those that are abrasive, fatty, contain rags and large solids, without blocking and failing.

#### The SSP Advantage

- **Cost effective easy maintenance**  
Low running and maintenance costs and easy access to pumphead minimising downtime, results in a reduced lifecycle cost (LCC).
- **Low energy consumption**  
Lower power requirements than other pump technologies.
- **Compact design**  
Occupies considerably less floor space than other pump technologies.

- **Abrasion resistance**

Pumphead and rotors can be supplied with a tungsten carbide coating to increase wear resistance. Also pump casings can be supplied with hardened, replaceable wear plates that can be replaced in-situ with minimal pump dismantling.



Series D pump on PST De-sludging application

# SSP Pumps - *Right first time, every time*

SSP Rotary Lobe and Disc ranges of pumps are channelled exclusively through a selected worldwide distribution network, and directly from the company's production facility located in Eastbourne, England.

## Series D

SSP Series D ductile iron rotary lobe pumps fulfill positive transfer duties throughout industry by providing durable cost effective performance.

- Flow rates up to 180 m<sup>3</sup>/h
- Differential pressures up to 15 bar
- Port sizes 80 - 150 mm



## Series G

SSP Series G rotary lobe pumps are designed for high volume transfer duties and are amongst the world's largest pumps of this type.

- Flow rates up to 680 m<sup>3</sup>/h
- Differential pressures up to 10 bar
- Port sizes 150 - 300 mm



## Single Disc

SSP Single Disc pumps are designed for use within effluent processes for pumping sludges and other waste media having entrained solids.

- Flow rates up to 24 m<sup>3</sup>/h
- Differential pressures up to 1.5 bar
- Sludge thickness content up to 6%



## Dual Disc

SSP Dual Disc are designed for use within effluent and industrial processes where arduous duties in harsh conditions exist.

- Flow rates up to 52 m<sup>3</sup>/h
- Differential pressures up to 3 bar
- Sludge thickness content up to 10%



Literature code number  
F/203/0807

Alfa Laval reserves the right to change specifications without prior notification.

Alfa Laval Ltd  
SSP Pumps  
Birch Road, Eastbourne  
East Sussex BN23 6PQ, England  
Tel: +44 (0) 1323 414600  
Fax: +44 (0) 1323 412515  
www.ssppumps.com