



# Keeping your processes clean

## Rotary Lobe Pumps for Soaps and Detergents



### Media

- Dishwash Liquid
- Dodecyl Benzene Sulphonic Acid
- Fabric Conditioner
- Fatty Acid
- Lye
- Neat Soap
- Sodium Lauryl Ether Sulphate
- Surfactants

### Application

- Blending
- Drying
- Mixing
- Recovery
- Separation
- Transfer

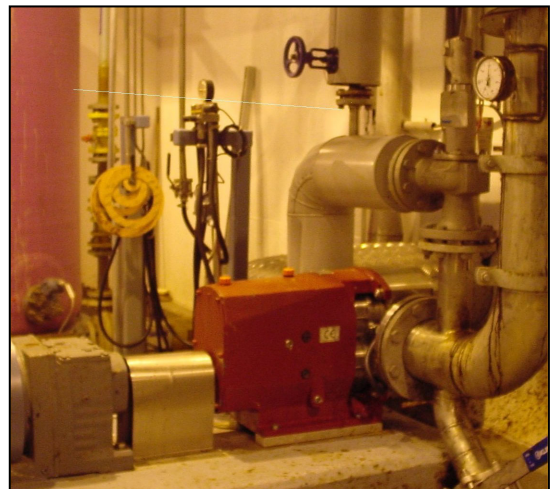
As a recognised market leader in pumping technology SSP has been at the forefront of supplying rotary lobe pumps to the soap and detergents industry for over 60 years.

SSP rotary lobe pumps are to be found in many stages of the soap and detergent manufacturing process, where their reliable low shear flow characteristics offer gentle handling of shear sensitive media and provide long trouble free service.

### The SSP Advantage

- **Cost effective easy maintenance**  
Low running and maintenance costs and easy access to pumphead minimising downtime, results in a reduced lifecycle cost (LCC).
- **Low shear pumping**  
Minimal damage to extremely shear sensitive media.
- **Ability to pump abrasive media**  
Non-contacting pumphead design ensures that abrasive particles do not cause excessive wear.

- **Indefinite dry running capability**  
Avoiding pump components shedding into pumped media.
- **Easy re-start**  
Low breakout torque following machine stoppages.
- **Compact design**  
Occupies considerably less floor space than other pump technologies.



Series S pump in a major soap making plant

# Rotary Lobe Pumps - *Right first time, every time*

SSP offers the broadest range of rotary lobe pumps available in the world today, channelled exclusively through a selected worldwide distribution network, and directly from the company's production facility located in Eastbourne, England.

## Series L

SSP Series L stainless steel rotary lobe pumps provide the simple solution to many processes.

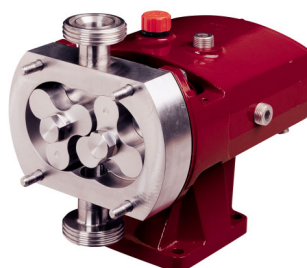
- Flow rates up to 48 m<sup>3</sup>/h
- Differential pressures up to 8 bar
- Port sizes 40 - 80 mm



## Series S

SSP Series S stainless steel rotary lobe pumps suitable for a variety of process and transfer applications.

- Flow rates up to 106 m<sup>3</sup>/h
- Differential pressures up to 20 bar
- Port sizes 25 - 150 mm



## Series X

SSP Series X stainless steel rotary lobe pumps provide the ultimate in clean pumping.

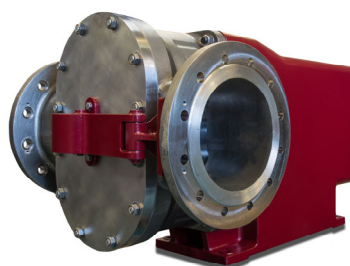
- Flow rates up to 115 m<sup>3</sup>/h
- Differential pressures up to 15 bar
- Port sizes 25 - 150 mm



## Series A

SSP Series A rotary lobe pumps are designed for high volume transfer duties and are amongst the world's largest pumps of this type.

- Flow rates up to 680 m<sup>3</sup>/h
- Differential pressures up to 10 bar
- Port sizes 150 - 300 mm



### Rheology Testing

In specifying a rotary lobe pump for a particular application, a crucial consideration is an understanding of how the pumped media will behave in the pump, connecting pipe work and associated equipment. Our on-site laboratory is equipped with a computerised rheometer to be able to determine a fluids viscous behaviour. As the only rotary lobe pump manufacturer in Europe with this facility that we know of, we feel this service is invaluable ensuring our philosophy of right first time, every time.

Literature code number  
F/205/1810

Alfa Laval reserves the right to change specifications without prior notification.

Alfa Laval Eastbourne Ltd  
SSP Pumps  
Birch Road, Eastbourne  
East Sussex BN23 6PQ, England  
Tel: +44 (0) 1323 414600  
www.ssppumps.com